

CLAE Connections, Volume 8, Issue 2

Dear Colleagues,

I am pleased to release the second issue of the eighth volume of '**CLAE Connections**', the official newsletter of the Canadian League Against Epilepsy. Inside you will find a treasure trove of information from colleagues from across the country, with an ongoing focus on latest developments from the COVID pandemic as well as news from our parent organization the ILAE.

The next issue of 'CLAE Connections' is expected sometime in June 2021; until then, happy reading.

Table of contents (This issue features)

1. **Editor's Introduction**
2. **Message from the CLAE President**
Ushering in a new term with Dr. Paolo Federico
3. **Message from the past president**
Parting words from Dr. Dang Nguyen
4. **In Memoriam**
Fallen colleagues we remember.
5. **CLAE news and updates**
Results from recent board member election, Award announcements
6. **Current clinical trends from across the country**
Some news from Halifax and Ontario and a new CLAE workgroup
7. **Early Career Spotlight**
New staff in QC, NS and ON
8. **Research project(s) at a glance**
9. **ILAE, AES News and initiatives**
ILAE Academy is up and running and recent election results in this section
10. **A message from the Canadian Epilepsy Alliance**
An intro to the Best Medicine Coalition
11. **Upcoming events**

Please help the ILAE reach you as a member by signing up to receive its content using the link <https://my.ilae.org/page/Consent>

Editor's Introduction

Dear all,

I hope this finds you safe. 2020 has been a difficult year thus far. I was thinking of writing a small piece on COVID fatigue and how much I am ready for this pandemic to end but that changed when I read of the sudden and tragic passing of our dear colleague Jose Tellez.

Ours is a close and tight knit community; we all pretty much know one another, and this one hit close to the chest. Jose's loss is immeasurable and will be felt for decades to come. Please read the wonderful words from Sam Wiebe and Jorge Burneo on his life and legacy. For my part I can only say that I will greatly miss his pearls, his advice, his smile and his boundless energy.

As always, this issue would not have been possible without the support of CLAE members who contributed to its content as well as our dedicated Publications Committee members.

Sincerely,

Tadeu Fantaneanu, MDCM, FRCPC.

Editor-in-Chief



Message from the CLAE President

Dear colleagues,

It is my honor and privilege to serve as the president of the CLAE for the next two years. I look forward to working you on our ultimate goal of improving the lives of persons with epilepsy. I would first like to thank Dang Nguyen for his tireless work over the past two years, steady leadership during the COVID-19 pandemic, and his continued involvement in many CLAE activities as Past-President.

Sad News

First, as many of you know, one of our dear colleagues Dr. Jose Tellez-Zenteno passed away on October 2, 2020. He was a beloved colleague and friend to many of us. His passing is a profound loss to persons with epilepsy in Saskatchewan and to the national and international epilepsy community. Please see the obituary in this newsletter, kindly written by Jorge Burneo and Samuel Wiebe.

Board of Directors

I would like to give my sincere thanks to following individuals for their work on the CLAE Board of Directors: Jorge Burneo (Past-President), Paula Brna (Treasurer), Deirdre Floyd (CEA Representative), Laura Jurasek (CENG Representative), and Jonathan Lau (Junior Member Representative). I would also like to welcome the following individuals to the Board of Directors: Mary Connolly (President-Elect), Laura Gagliano (Junior Member Representative), Karen Legg (CENG Representative), Cynthia Millburn (CEA Representative), Raluca Pana (Treasurer), and Morris Scantlebury (CERI Representative). We look forward to working with you.

2020 North American Epilepsy Conference

Well, what can be said? COVID certainly posed a challenge to organizing this meeting. However, true to form, the CLAE in collaboration with the ILAE, organized an outstanding meeting that was enjoyed by all. A special thanks goes to Nathalie Jetté, Dang Nguyen, and the CLAE Education Committee (Alyin Reid, Chair), ILAE, and the CLAE Secretariat for organizing the meeting. There were 526 participants. I also thank the following sponsors for their generous support of the meeting Eisai, LivaNova, Pendopharm, Sunovion, and UCB.

2021 Annual Scientific Meeting

The next CLAE Annual Scientific Meeting is tentatively scheduled to occur from September 24-26, location TBD. Please stay tuned for details, particularly as it relates to the COVID pandemic. Hopefully, we can all meet in person by then.

2020 Awards

I am pleased to announce the following recipients of the 2020 Annual CLAE Awards:

- Mary Ann Lee Award: Karim Mithani (University of Toronto). Supervisor: Dr. George Ibrahim.
- Fellows/Post-Doc Award: Natalie Phillips (Hospital for Sick Children). Supervisors: Dr. Mary Lou Smith and Dr. Elysa Widjaja.
- Graduate or Medical Student Award: Laura Gagliano (Polytechnique Montreal). Supervisor: Dr. Dang Nguyen.
- Allied Health Student Award: Gohar Rizwan (University of Toronto). Supervisor: Dr. Aylin Reid.

Also, I am pleased to announce the following recipients of the 2020 CLAE Epilepsy Fellowship Award (\$64,000), generously provided by UCB:

- Dr. Laura Gill (University of Calgary). Supervisor: Dr. Paolo Federico.
- Dr. Paul Lessard Bonaventure: (Western University). Supervisor: Dr. David Steven.

Closing comment

The COVID pandemic has impacted all of society in a multitude of ways. However, I am extremely proud how the CLAE membership has persevered through these difficult times. We have all had to change how we work, communicate, play, and socialize. Together, I am proud to say that we continue to provide exceptional care and support to our patients and their loved ones. This must continue. We have also shown our resilience to come together (virtually) during the exceptional North American Epilepsy Congress in September. We continue to collaborate, educate, and perform research despite these challenges.

The future course of the COVID pandemic and its impact on us is unknown. However, it is clear that this pandemic is affecting some of our programs, resources, and sponsorship funding. Despite these challenges, I am confident that with all of your support, we will continue our mission as strong advocates for persons with epilepsy.

Wishing you all good health,

Paolo Federico MD, PhD
CLAE President



Message from the past President

Montreal, September 27, 2020

Dear colleagues and members of the CLAE,
Today was my last day as President of the CLAE. It has been a pleasure and a privilege for me to hold this position for the last two years. I wanted to take a few lines of the CLAE newsletter to thank all members of the support and administration staff, members of the executive committee, the board of directors, and members of the various CLAE committees for their contribution to the CLAE. I'm very proud of what we have accomplished together, especially over the last few months during the pandemic. Thank you also to all CLAE members for their active participation in our events, notably the 1st North American Epilepsy Congress which exceeded my expectations.

Starting tomorrow, Dr. Paolo Federico will take over the reins of the CLAE. I am convinced that all together, we will be able to bring the CLAE to new heights. As for me, I will be staying as past-president to ensure a smooth transition and to bring to conclusion some initiatives started during my mandate, notably the Jean Gotman and Marilyn Jones-Gotman scientific event and fundraising dinner, and the creation of a white paper to improve the care of epilepsy across Canada.

Once again, I thank you all for your contribution and I hope to see you in person when the COVID-19 pandemic is over.

Sincerely,
Dang Nguyen, MD, PhD
Past-president, CLAE



In Memoriam



Jose F. Tellez-Zenteno, MD, PhD

Head of the Epilepsy Program at the University of Saskatchewan, Saskatoon, passed away on October 2nd, 2020. Jose was born in Mexico and earned his medical degree at the National University of Mexico (UNAM) in 1996. He then completed specialty training in internal medicine and in neurology at the National Institute of Medical Sciences and Nutrition "Salvador Zubirán" in Mexico City. During that time, he also obtained a PhD in Clinical Epidemiology



In 2003 Jose and his family moved to Canada to train in Epilepsy and EEG, first at the London Health Sciences Center in London, Ontario, and subsequently at the Foothills Medical Center in Calgary, Alberta. He thereafter joined the Division of Neurology at the University of Saskatchewan, where he soon became Director of the Epilepsy Program, a position he occupied until his untimely death.

When Jose moved to the University of Saskatchewan, it became rapidly clear that he had extraordinary administrative and leadership skills. He built the adult epilepsy program, and importantly, the epilepsy surgery program in Saskatoon. His relatively fast and smooth progression through the academic ranks brought him to the position of Full Professor in 2013.

His primary research focus was on the Epidemiology of the Epilepsies, and his systematic reviews, meta-analyses and studies on the epidemiology and comorbidities of epilepsy became world renown. He was a prolific writer, publishing more than 160 peer-reviewed articles, and his research was funded by a number of regional and national agencies. He was awarded the prestigious Bruce Schoenberg International Award in Neuroepidemiology by the American Academy of Neurology, the Mudjadik Thyssen Mining Professorship in Neuroscience by the Royal University Hospital Foundation in Saskatoon, the National Researcher Award by the Mexican National Council of Science and Technology, and The Clinical Practice and Advocacy Award from the Canadian League Against Epilepsy (CLAE).

Jose was an engaging and popular speaker at epilepsy meetings, not only at the national level, but mainly internationally. He served on the Board of Directors of the CLAE, the Canadian Society of Clinical Neurophysiology –becoming its President, and the Canadian Board of Registered EEG Technologists. He also served in different committees and Task Forces of the International League Against Epilepsy, in editorial boards of a number of scientific journals, and he contributed to the creation of guidelines for the management of epilepsy.

Jose had a passion for education and was known for his skill in communicating with patients, students, colleagues, and friends. He had a deep appreciation for life and an unsurpassed sense of humor. He was a great soccer player, and was an avid lover of art, particularly paintings from Mexican artists. He was deeply loved by his clinical team whom he treated as family.

His untimely death is an extraordinary loss to all his patients, to the University of Saskatchewan and to national and international epileptology. For us, his friends and colleagues, the sense of sadness and irreparable loss is profound. We are privileged to have known such a remarkable human being. He made us all better. We will miss him.

Written by;

Jorge Burneo, MD, London, Ontario

Samuel Wiebe, MD, Calgary, Alberta



ANTHONY MULENGA ZIMBA

It is with great sadness that IBE announces the death of its esteemed Treasurer, Anthony Mulenga Zimba. A victim of Covid-19, Anthony passed away in hospital in Lusaka, Zambia, on the morning of Sunday 9th August. Anthony had a long history of service to IBE, having served on the African Regional Committee from 2005 to 2009 and on its International Executive Committee for the last 11 years, firstly as Vice President for the African Region from 2009 to 2017 and as Treasurer from 2017 until his passing. During this time, he worked tirelessly on behalf of people with epilepsy and those who care for them. His particular focus was on his beloved Africa and, as a result of his efforts, many IBE chapters in the region were supported through the IBE Promising Strategies Program in a range of projects aimed at improving their quality of life through training, advocacy and employment opportunities. He was also a member of the organising committee of the African Regional Epilepsy Congresses that took place in Nairobi, Cape Town, Dakar and Entebbe.

Anthony was the founder of the Epilepsy Association of Zambia in 2001, which became a chapter of IBE soon thereafter. To improve his knowledge and skills in the epilepsy and allied fields, he undertook a number of professional courses including the Professional Diploma in Epilepsy Care from Leeds Metropolitan University, UK; the Certificate in Clinical Epilepsy from the Foundation for Professional Development, South Africa; and the Certificate in Project Management at the University of Zambia. Previously, in 1982, he had studied for a Diploma in Clinical Medical Sciences at the College of Health Sciences in Lusaka.

He worked as an Epilepsy Specialist at Levy Mwanawasa Hospital in Lusaka and established epilepsy clinics at government health institutions in collaboration with the Ministry of Health. He also had a private practice - the Country Travellers' Health Care Clinic - which specialises in psychiatry and epilepsy. To his colleagues and patients, his death will be a tremendous loss.

Anthony leaves behind his wife, Dr Meaumui Mumbela, and four adult children from his first marriage - Alex, Anthony, James and Cindy. On behalf of the IBE International Executive Committee and all his colleagues at IBE, we extend our deepest sympathy at this very sad time to his family. We hope that memories they hold of Anthony as a husband and father and deserved pride in his dedication to people living with epilepsy both in Zambia and across the entire African region, will help them at this very difficult time.

May he rest in peace.

Martin Brodie
President

Mary Secco
Secretary General

Ann Little
Executive Director



CLAE news and updates

As Dr. Federico noted, we are pleased to announce the 2020-2022 CLAE Board of Director Election Results below.

President Elect



Dr. Mary Connolly
University of British
Columbia

Treasurer



Dr. Raluca Pana
McGill University

Junior Member Representative



Laura Gagliano
Polytechnique Montreal

This year's CLAE awards were also awarded to the following colleagues for their work.

The Mary Ann Lee Award: **Karim Mithani**, University of Toronto
"Connectomic Profiling Identifies Responders to Vagus Nerve Stimulation" in *Annals of Neurology*
Supervisor: Dr. George M. Ibrahim

The Fellows/Post-Doc Award: **Natalie Phillips**, Hospital for Sick Children
"Impact of resective surgery for pediatric drug-resistant epilepsy on emotional functioning" in *Epilepsy & Behaviour*
Supervisors: Dr. Mary Lou Smith and Dr. Elysa Widjaja

The Graduate or Medical Student Award: **Laura Gagliano**, Polytechnique Montreal
"Bispectrum and Recurrent Neural Networks: Improved Classification of Interictal and Preictal States" in *Epilepsy & Behaviour*
Supervisor: Dr. Dang Nguyen

The Allied Health Student Award: **Gohar Rizwan**, University of Toronto

“Increased seizure susceptibility in a mouse model of Neurofibromatosis Type 1” published in *Epilepsy Research*

Supervisor: Dr. Aylin Reid

Current clinical trends from across the country

Some news from CHU de Québec- Université Laval.

- We reviewed our local statistics for epilepsy surgery: 1993-2020 -- 27 years!
- We participate in the Canadian Database for Tuberous Sclerosis (M.Keezer, principal investigator)
- We have a new epileptologist: Dr.Laurence Martineau (fellowship at U of Montreal and Grenoble, France) who joined in January 2020

- We participate in the Quebec Epilepsy Task Force (very much inspired by the Ontario Task Force)
- We finally have a (timid) access to ketogenic diet for adult epileptics

Prepared by Richard Desbiens (Québec, QC).

Introducing the Women's Issues in Epilepsy – CLAE Working Group

Established in 2019 this working group consists of CLAE members across Canada including adult and pediatric epileptologists, nurses and nurse practitioners as well as members in obstetrics and gynecology. Our current mandate is to advance our understanding of this important topic, specific to Canadians, as it pertains to:

1. Pregnancy and epilepsy
2. Gender issues in the transitional phases of adolescents with epilepsy
3. Hormonal influences on epilepsy
4. Comorbidities seen among women with epilepsy

We are currently preparing a national survey to better understand current practices, coast to coast, in the management of WWE and look forward to sharing our findings with you.

Prepared by Esther Bui (Toronto, ON)

News from Halifax, NS and Ottawa, ON

In Halifax, the first seizure clinic has been thriving for many years. However colleagues have recently redesigned their First Seizure information pamphlet for patients; this will soon be rolled out to emergency docs to give patients when they present so they have some accurate information before their appointments in the clinic.

Based on the Halifax model, the Ottawa Epilepsy Program is also launching a First seizure clinic and a Women's Health Clinic as part of a reorganization of its operations. The program will soon launch a new website highlighting its close working relationship with the Children's Hospital and community program, Epilepsy Ottawa.

Stay tuned for updates.

Prepared by Dr. Ikeda (Halifax, NS) and Dr. Fantaneanu (Ottawa, ON).

A message from the Canadian Epilepsy Alliance



The Canadian Epilepsy Alliance has representatives that serve on the Best Medicines Coalition (BMC). The purpose is to represent Canadians living with epilepsy in relation to medication supply and advocacy issues. The Best Medicines Coalition is a national alliance of patient organizations with a shared goal of equitable and consistent access for all Canadians to safe and effective medicines that improve patient outcomes. The BMC's areas of interest include drug approval, assessment and reimbursement, as well as patient safety and supply issues. As an important aspect of its work, the BMC strives to ensure that Canadian patients have a voice and are meaningful participants in health policy development, specifically regarding pharmaceutical care.

In the spring, our CEA representatives along with other members of BMC met with Health Canada on several occasions to discuss methods to make sure drug supply was not interrupted during the COVID-19 outbreak. The Canadian Pharmacy Association wanted to bring in guidelines so that medications for different conditions could be dispensed in a way to prevent hoarding of medications during COVID -19. The decision was to limit refills to one month so that all Canadians would have access to medications for different conditions.

There were representatives from the Best Medicines Coalition including our CEA representatives that had several meetings with Health Canada and the Multi-Stakeholder Committee on Drug Shortages to address the additional cost of dispensing fees and other issues that were relevant to this issue. Since then most provinces have relaxed the guidelines and 3-month prescriptions are permitted again apart from any medications that could be used for treatment for COVID 19 symptoms.

Finally, ongoing talks with Health Canada regarding the United States trying to import cheaper drugs from Canada remains a concern for BMC members. At this time, Health Canada has assured BMC that they won't allow our supply to be exported to the United States as it is deemed necessary for use within Canada only.

If you want to learn more about the Best Medicines Coalition please visit <https://bestmedicinescoalition.org>

Prepared by Deirdre Floyd, CEA Past president and IBE representative

Early Career Spotlight

Dr. Elie Bou Assi was recently appointed as an IVADO assistant professor in the Department of Neuroscience at the University of Montreal (September 2020) and a principal researcher at the University of Montreal Hospital Research Center. His research interests cover the application of AI techniques to improve the management of neurological and psychiatric conditions. He is particularly interested in epilepsy research, having undergone his postdoctoral studies within Dr. Dang K. Nguyen's research laboratory. He has several publications on the application of machine learning and advanced signal processing techniques within the context of epilepsy. Dr. Bou Assi has been an active CLAE member since 2018 and was the recipient of the CLAE 2019 Trainee Publication Award.



Dr. Ben Whatley is delighted to have joined the Division of Neurology at Dalhousie University, Halifax, Nova Scotia, as an epileptologist and neurologist.

For the past two years, Ben has been a clinical and research fellow in epilepsy and neurophysiology at the National Hospital for Neurology and Neurosurgery, Queen Square, in London, UK. He was fortunate to receive funding for that position through a Detweiler Travelling Fellowship (Royal College of Physicians and Surgeons of Canada), and the Samuel R. McLaughlin Fellowship (Dalhousie University). While there, his clinical focus was on the presurgical evaluation of patients with medically-refractory epilepsy. Research interests included imaging markers of SUDEP risk, statistical evaluation of PET and SPECT imaging, and optimizing the yield of scalp EEG.

Back in Halifax, Dr. Whatley is very happy to join an already well-established epilepsy surgery program, where he will bring his specific skills in applying multimodal imaging techniques to localizing the epileptogenic zone.



My name is Marlee Richardson and I am a new member of the Halifax epilepsy program. I am a registered nurse with a background in general medicine, neurology and the epilepsy monitoring unit and am working as the new Epilepsy Program Coordinator. In this role I work closely with the first seizure clinic, the medically refractory population, patients waiting for admission to our EMU, as well taking a lead in the management of our patients with vagal nerve stimulators. I am delighted to join this dynamic team in providing excellence in epilepsy care in Atlantic Canada.

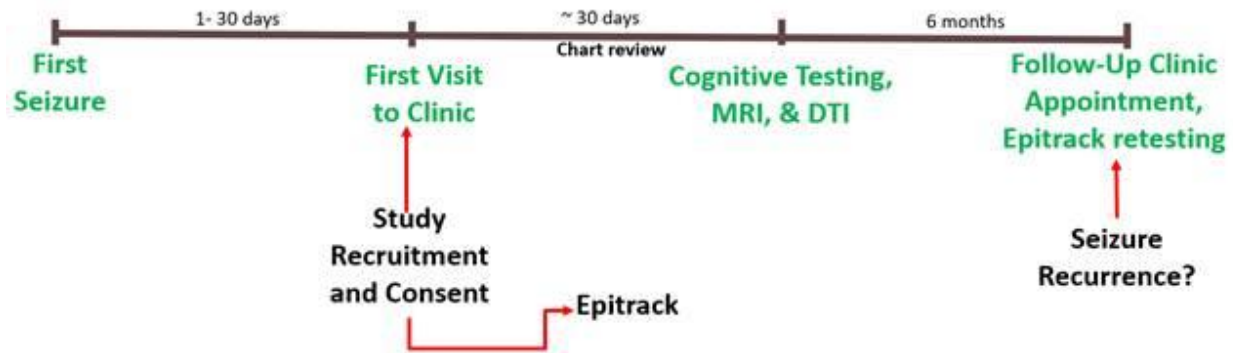


My name is Sabrina Chang, a registered nurse with a bachelor and a master's degree in nursing. I currently share a dual role in the Epilepsy Clinic and the Epilepsy Monitoring Unit (EMU) at The Ottawa Hospital. In the clinic nurse role, I work closely with people with first-time seizures, medically refractory seizures, and women with epilepsy. I facilitate patients and physicians phone calls, assess their needs, and provide seizure and medication related educations. As the EMU liaison/coordinator (I don't really have a title...), I triage EMU referrals as well as coordinating and preparing patients for their EMU admissions. I also provide trainings for the EMU nurses. I am proud to be a member of this fantastic program in providing excellence in epilepsy care in our capital city.



Research project(s) at a glance

There is evidence that functional and structural brain connectivity, along with cognitive and psychological status at the time of FS (First Seizure) or NOE (New Onset Epilepsy) diagnosis are associated with seizure recurrence. In this study, 50 adult patients from the Halifax First Seizure Clinic (HFSC) will complete a cognitive/mood screen and an MRI exam (including rsfMRI) shortly after HSFC referral; information regarding seizure recurrence will be collected after six months and again at one year. This is a pilot study that will help us select predictor variables that, in combination, hold the most promise of accurately determining epileptogenesis following FS and seizure recurrence in NOE.”



Prepared by Tonya Omisade, Halifax, NS.

ILAE, AES News and initiatives



Dear ILAE chapter representatives

The virtual ILAE Academy opened July 6th, 2020. It is a newly developed e-learning platform for all healthcare professionals worldwide who diagnose and treat epilepsy. We kindly ask you to disseminate the attached information to all of your members. The ILAE Education council will also offer a special discount for ILAE chapters, e.g. when >10, >50, or >100 users will enroll to the full course package for Level 1. Please contact us at ilaeacademy@ilae.org for any further information.

Modified from the ILAE newsletter text (to be disseminated amongst all of your ILAE chapter members)

The ILAE Academy opened July 6th, 2020, and proudly presents a series of highly interactive, practice-oriented and self-paced online courses. Be first to enroll in 15 realistic case-based e-learning modules for most common epilepsies* developed by our ILAE experts, as well as our series of 50 ebrain sessions, the new interactive MRI teaching platform with textbook, exercises and cases and 10 histopathology tutorials for most common brain lesions. We invite you to start working on your competencies for the entry level of Epileptology covering all learning objectives for Level 1 according to the ILAE curriculum (see Blumcke et al. 2019; doi: 10.1684/epd.2019.1039), track your progress and earn a certificate.

Explore the current course portfolio at www.ilae-academy.org, register TODAY and take advantage of our special launching discounts**.

Please enjoy this new e-learning experience for Epileptology and see Beniczky et al. 2020 (doi: 10.1684/epd.2020.1157) for more information regarding ILAE's entire e-learning program.

* 6 cases are currently accessible via the ILAE Academy featuring the online case discussion forum to meet with peers and ask the expert; all 15 cases will be made available until end of 2020.

**please explore our promotion for resource-poor countries, bursaries, 'try before you buy', and the Level 1 full package discount, available for a short time only!

ILAE Academy has launched!

A major initiative of the ILAE, our new online Academy has highly interactive, practice-oriented courses for healthcare professionals worldwide who diagnose & treat epilepsy. Explore the academy at www.ilae-academy.org. Spread the word, particularly to young colleagues.

COVID-19 and Epilepsy

Please encourage those you know to complete and circulate the surveys for patients (available in 10 languages other than English) and clinicians – and to report unusual cases of epilepsy and COVID-19. These as well as FAQs for patients and clinicians and other useful references are on the ILAE website at www.ilae.org/patient-care/covid-19-and-epilepsy

Provide feedback on new draft guideline for automated seizure detection using wearable devices

[Read the and comment on the proposed guideline here.](#)

Comment deadline: 31 July, 2020.

***Epilepsia's* Impact Factor increased to 6.040**

In addition, the journal is now ranked 20/204 in the Clinical Neurology JCR category, up from 25 last year.

ILAE-IBE Joint Statement on Racism

Both organizations are committed to reducing the unacceptably high gap in access to effective care and treatment for epilepsy that, too often, disproportionately impacts minority groups. Institutional barriers, including racism within the health sector, form part of this challenge.

[ILAE and IBE Joint Statement on Racism](#) | [Declaración de la ILAE e IBE sobre el racismo \(Spanish\)](#)

Procedure for Publishing Reports for Publication from League Commissions and Task Forces

To assure that all publications carrying the League's name reflect this central goal, the Executive Committee has approved a process that will govern the preparation, review and approval of reports from ILAE Task Forces and Commissions. Please see the formal [Process of Publishing Reports](#) for full instructions. This document is always available under [Guidelines & Reports](#) on the ILAE website.



2221 Justin Rd, #119 - 352, Flower Mound, TX 75028

www.ilae.org



ILAE Management Committee 2021-2025 Election Results

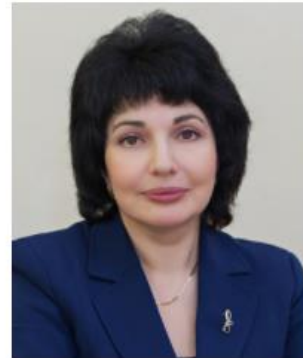
The election of the ILAE Management Committee for the 2021-2025 term concluded on 18 September 2020. It is with great pleasure that we announce that Dr. Ed Bertram, Dr. Roberto Caraballo, and Dr. Alla Guekht were elected and have all accepted their election to the Management Committee for the next term. We thank the other 10 candidates for running and are sure that they, along with all of our members, will join us in congratulating the new committee members on their success. See [complete information about the ILAE election process](#)



Ed Bertram



Roberto Caraballo



Alla Guekht



The ILAE COVID-19 Task Force is seeking input from all regions of the world about the use of telemedicine in clinical epilepsy, particularly in the light of the COVID19 pandemic. Are you using it? Why or why not? What are the problems you encounter with technology, costs, and level of care?

[Share your feedback](#)



ILAE COVID-19 and Epilepsy Research Award

Special award for the best research, published or in press, undertaken during the COVID19 pandemic. **Application deadline 15th December 2020.**

[COVID Research award details](#)

2021 Michael Prize



STIFTUNG MICHAEL

The Michael Prize is one of the most highly regarded international awards for the best contribution to scientific and clinical research which promote further developments in epileptology. Awarded biennially, it is specially designed to attract scientists not older than 45 years of age.

Submission deadline: 31 December, 2020.

[Michael Prize nomination information](#)

AES2020: Registration Now Open!

You won't miss a thing. Get all the education, science, networking, and clinical advances you expect from AES. You'll have access to more top-quality AES education and other resources than ever before ... *at a 25% discount from regular meeting rates.*

Your registration to AES2020 is all-inclusive. You'll get:

More than 150 hours of programming offering a minimum of 34.75 *AMA PRA Category 1 Credits™* including ...

40 Special Interest Groups

11 symposia and the always popular Annual Course

5 special lectures

20 Investigators Workshops

11 Skills Workshops

Professional development sessions

Satellite symposia

Scientific exhibits

... so much more!

- The chance to catch up with your colleagues and peers from across the globe
- On-demand access to session recordings for 90 days after the event
- Access to an engaging virtual poster hall (more than 1,000 posters!) boasting cutting-edge research and advancements in epilepsy

Entry to a robust virtual exhibit hall, where you can learn about the latest treatments and enjoy opportunities to win prizes

As an AES member, you are invited to register for AES2020, our all-new virtual event, a day before registration opens to the rest of the epilepsy community. *To qualify for the AES2020 member rate, your membership must be current at the time of your registration.*

[REGISTER NOW](#)

FDA Alert: Benzodiazepines

FDA issued a September 23, 2020 [Drug Safety Communication](#) requiring Boxed Warning updates for all benzodiazepine medications to improve safe use of this drug class and address the serious risks of abuse, addiction, physical dependence, and withdrawal reactions. FDA is also requiring updates to the [Prescribing Information](#) and [Medication Guides](#) for these medications.

The Drug Safety Communication provides details, rationale for the new requirements, and information for health professionals. FDA encourages patients and health care professionals to report side effects of benzodiazepines and other medications to the [FDA MedWatch program](#).

The [AES Drug Alerts and FDA News page](#) provides ongoing updates related to antiseizure medications.

Research Funding

Seed Grants

Seed grants provide funds for one year to help launch new lines of investigation and compete for larger grants.

- All fields of epilepsy research are eligible for AES funding
- Specific fields of research may compete for funding from AES partners, including the NORSE Institute and FamilieSCN2A Foundation

[LEARN MORE](#)

Research and Training Workshop Grants

These AES grants provide funding to support scientific conferences and workshops focused on epilepsy research and training.

[LEARN MORE](#)

Application Period Open: Early Career Grant Programs

Deadline: Wednesday, January 13, 2021

AES is committed to developing the next generation of epilepsy investigators and is proud to be one of the largest non-

governmental funders for individuals starting careers in epilepsy research.

AES grants are made possible thanks to generous philanthropic donations by AES members, funding partners, individual donors, and industry supporters to the Susan S. Spencer Fund for Clinical Research and Education, the Lennox and Lombroso Trust for Research and Training, and other funds..

Predoctoral Research Fellowships: \$30,000
Postdoctoral Research Fellowships: \$50,000
Junior Investigator Awards: \$50,000
Research and Training Fellowship for Clinicians: \$50,000
Epilepsy Study Consortium Mini-Grant: \$15,000 (for epilepsy fellows)

All fields of research compete equally for AES research dollars. Certain types of research will compete for funding from partners, such as FamilieSCN2A Foundation, the Epilepsy Foundation, and 11 others. Partners and their priorities can be viewed [here](#).

Upcoming events



10 - 13 June 2021

13th Asian & Oceanian Epilepsy Congress

Fukuoka, Japan

Abstract submission now open



28 August - 1 September 2021

34th International Epilepsy Congress

Paris, France



27 February - 1 March 2021

11th Latin American Congress on Epilepsy (LAEC)

XI Congreso latinoamericano de Epilepsia

The congress will be fully *virtual*.

Other Events in Epilepsy

For the current status of the events below, please check their respective websites.

October 4-9 - [ANA2020](#) (online)

October 12-23 - [2020 CNS-ICNA Conjoint Meeting](#) (online)

November 4 - [RNS Programming Webinar](#) (online)

November 9 - [Metabolism-based Therapies for Epilepsy Workshop](#) (Bethesda, MD)

December 2 - [PNES in the EMU Webinar](#) (online)

December 4-8 - [AES2020](#), A New Virtual Event from AES (online)